

Creative Camera Club, Inc.

Meeting: April 15, 2010
7:00 p.m.
Crestwood Christian Church
See page 4 for directions!

member of lexarts (www.lexarts.org)



Lexington, KY
April 2010

Submit digital images for consideration in this month's competition by 11.59 pm Tuesday, April 13 to dan.smith.ky@gmail.com

Photo Competition *Animals*

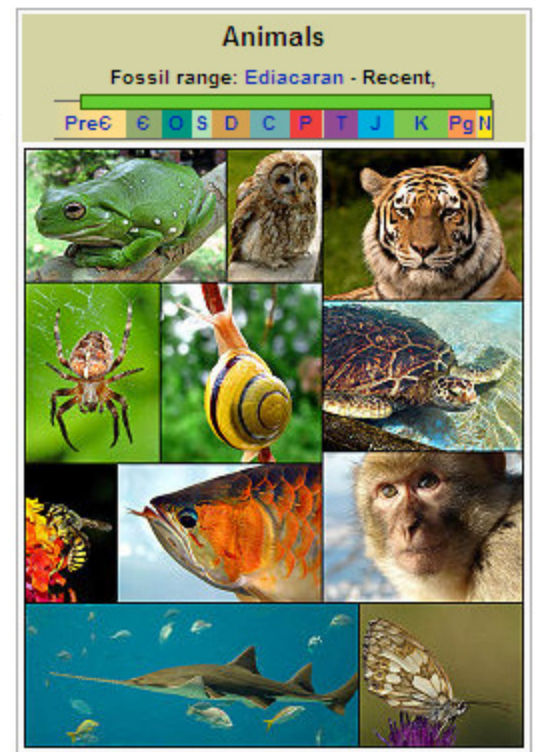
You will find complete instructions on the web site for submitting Digital Images for the competition.
<http://www.creativecameraclub.org/cropping/cropping.html>

The print category for competition is limited to Black and White entries only. We are no longer accepting slides for competition.

The word "animal" comes from the Latin word animal (meaning with soul, from anima, soul).

In everyday colloquial usage, the word usually refers to non-human animals. Frequently only closer relatives of humans such as vertebrates or mammals are meant in colloquial use.

The biological definition of the word refers to all members of the Kingdom Animalia.



GALLERY HOP EXHIBITORS

April 16, 2010

Those who are exhibiting this month at Two Can Gallery Exhibit take note!

Framed prints may be delivered to Two Can 320 West Second Street by 4pm on Tuesday April 13. Pictures should be ready-to-hang. Call Charters 231.5204 or Frank 266.1699 to ensure there will be someone at the gallery to receive your prints.

Please bring finger foods to share with Gallery Hop attendants.

Those who are not exhibiting - stop by and show support for the Club's Gallery.

The Quest for Decent Exposure

Welcome to First Thursdays -

This is a new opportunity to meet in an informal setting and explore in depth topics of interest. We will meet at our normal venue - Crestwood Christian Church (directions on page 4).

Our inaugural session is Thursday May 6, 7 - 9pm at the church where we will expose *Exposure* and how to achieve Optimal Exposure with our cameras.

Bring your cameras!
Bring the manuals (yes, you really should read them!)
Bring your questions

We'll bring people with answers.

Hope to see you then.

Upcoming Events, Exhibits, Workshops

EXHIBIT OPEN HOUSE - APRIL 16, 5.00 - 8.00PM
Club members are invited to the second Open House and Exhibit of 29 Local Photographers at the Offices of the Fayette County Attorney, 110 W Vine. This event is part of the Gallery Hop. Add this venue to your tour Friday night.

KY ROLEX THREE DAY EVENT
April 22 - 25 at the Horse Park

MACRO PHOTOGRAPHY: GOD IN THE DETAILS

<http://www.kanuga.org/conferences/2010/photography.shtml>

A week-long macro photography workshop in Hendersonville, NC, April 25-30.

If you are fascinated by the details of the world around you, there is no better way to share them than through macro photography.

Whether you are lured by flowers, intrigued by patterns in metal or fascinated by stamps, this class teaches you the camera settings and skills to create amazing close-ups of the miniature world. Come learn how to reveal the best in your subject with effective lighting and composition techniques.

Bring a digital camera you know how to use along with extra memory cards and batteries. A tripod is recommended.

PLAN AHEAD -

The Kentucky PhotoScenic Weekend at Cumberland Falls, Sept 24-25. This is a FREE digital photography workshop. REGISTER VIA EMAIL to: photoscenicworkshop@gmail.com

Things to shoot and things to see

2010 Competition Topics

February - Facial Expressions

April - Animals

June - Trees

August - Flowers

October - Cemeteries

Two-Can Gallery - call for Prints May 20

The Club's third Gallery Hop exhibit at the Two-Can Gallery is at 320 West Second Street will be June 18. We will be seeking prints for consideration for that show at the May meeting. Bring sample Prints for consideration to the May 20 Club meeting. Be sure to label every print with your name and contact information.

Contact Frank Becker (266-1699) or Charters Osborne (231-5204) for more information

Complete Rules for Submission can be found <http://www.creativecameraclub.org/twocan.pdf>

Natural Bridge Wildflower Weekend - April 23 - 25, 2010

The beautiful area around Natural Bridge is home to hundreds of native plant species; enjoy them this weekend with other botanists, gardeners, and nature lovers. Our field trips are for all levels of participation, from beginner to advanced wildflower enthusiasts and from short easy walks to longer hikes at Natural Bridge and the Red River Gorge Geological Area! Evening speakers will focus on the native plants in the region. Registration fee upon arrival. For more information contact Brian Gasdorf at brian.gasdorf@ky.gov. Start Time: 8:30 A.M. End Time: 11:00 A.M.

<http://internet.parks.ky.gov/EventCalendar/SearchEvent.aspx>

Art in the Cathedral - call for Prints - May 12, 2010

Our mid-year Open Print Show at Christ Church Cathedral's Art in the Cathedral gallery is rapidly approaching. Due to space limitations, prints will be juried and the number of selections limited.

We will be accepting submissions Wednesday May 12 between 3-6pm.

The Club will host the June 18 Gallery Hop, and is responsible for providing the snacks for the event.

The exhibit will be open to the public from May 16 - July 11 (pick up July 14).

Shaker Workshop 2010 Photography Competition - deadline June 15, 2010

Purpose: To illustrate the best aspects of Shaker design and to demonstrate the successful use of Shaker furniture and accessories in everyday life. Preference will be given to photographs which include either original Shaker architecture and objects, and/or Shaker Workshops reproductions.

Categories:

Interior Shots - These may be taken at Shaker or non-Shaker sites. Subjects may include residential or commercial interiors featuring original Shaker furniture or Shaker Workshops® furniture, or specific Shaker objects (baskets, boxes, textiles, etc.).

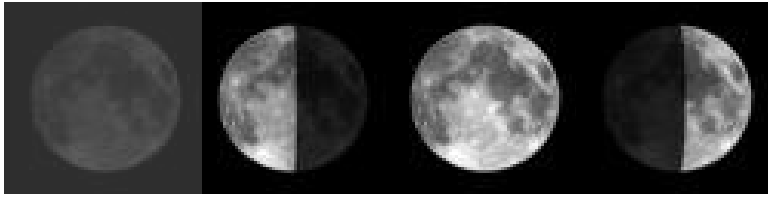
Exterior Shots - These may be of Shaker architecture or Shaker sites, at any season of the year.

Prizes: The **First Prize** is a **\$100.00 Shaker Workshops Gift Certificate** and your photograph on the cover of the Shaker Workshops catalog, with on-cover credit and a brief biography on the back cover. There will be 2 first place winners for 2010

Details of Entry: The photography competition is open to all photographers, amateur or professional.

Mail entries to: Shaker Workshops, c/o 2010 Photography Competition,
P. O. Box 8001 Ashburnham, MA 01430-8001

- Email entries in .JPG or .TIF format to: photo@shakerworkshops.com
- You may send in as many entries as you like.
- Entries must be **color** images. Slides, prints, or digital images are all acceptable. **Portrait orientation is preferred**, but not required (Photographs with Landscape orientation will most likely be cropped when used on the catalog cover).
- Please include your name, address, and a short description of each photograph.
- Deadline for entries for the 2010 Shaker Workshops Photography Competition: June 15, 2010.
- If you would like your photograph(s) returned, please include a SASE.
- No purchase is necessary to enter this competition.



Full Moon

April 28, 2010

May 27, 2010

New Moon

April 16, 2010

2010 Club Calendar

Jan 21 It's In the Bag - Bill Fortney
Nikon Rep tells us all about his bag of tricks

Feb 2 **Deadline** Insect Photo Salon
deadline - check the website
18 Facial Expressions Competition
19 Gallery Hop

Mar 18 Insect Photo Salon

Apr 15 Animals Competition
16 Gallery Hop

May 12 **Deadline** - Art in the Cathedral
exhibit submissions
16 Exhibit opens
20 Pam Spaulding
"An American Family"

Jun 17 Trees Competition
18 Gallery Hop Art in the Cathedral

Jul 15

Aug 19
Flowers Competition

Sep 16
17 Gallery Hop

Oct 21 Cemeteries Competition

Nov 18 Print Show Competition
(tentative)
19 Gallery Hop

Dec TBA
Annual Christmas Party and
Awards Banquet

All Club Calendar entries are tentative and subject to change. Check the website for up-to-date information.

Meeting Location

To get to the church - exit off New Circle Rd. at Tates Creek Rd. and go north (toward town), turn left on Albany Rd. (about the 4th stop light), go nearly one-half mile to the 4-way stop at Bellefonte Dr., and turn right onto Bellefonte. The church will be on the right just past Glendover Elementary School. Turn right into the second entrance off Bellefonte.

2010 Officers

President	Tom Myers 859-272-1150
Vice President	Dan Smith 859-327-8513
Secretary	Maryann Mills 859-234-6765
Treasurer	Don Mills 859-234-6765
Newsletter Editor	Lynn Osborne 859-231-7241
Board of Directors:	
Jim Kerr	859-420-8535
Sandy Varellas	859-268-7307
John Robinson	859-236-3894
Past President, John Snell	859-254-1929